

- Compact, 15 mm micro solenoids, normally closed
- Piped exhaust for clean room applications
- Sub-base and manifold mounting
- Low power coil
- Encapsulated coils with very rapid fitting
- Manual override as standard

**3/2 Poppet Valves  
Electrically Actuated  
Sub-base Mounted  
M5**



#### Technical Data

Medium:

Compressed air, filtered, lubricated and non-lubricated

Operation:

Poppet valve, directly actuated with spring return

Mounting:

Through-holes in sub-base and manifold, threaded

Port Size:

M5

Operating Pressure:

0 – 10 bar

Flow (to CETOP RP50P):

'C' - Conductance dm<sup>3</sup>/s/bar 0,08

'b' - Critical pressure ratio 0,45

Operating Temperature:

-15°C\* to +40°C

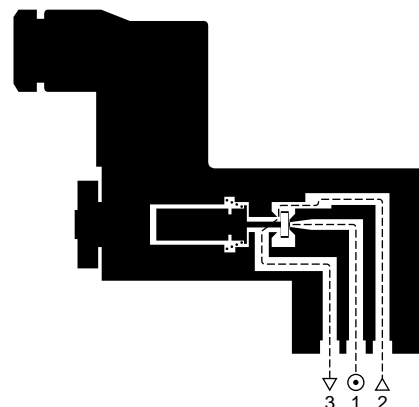
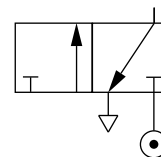
\*Consult our Technical Service for use below +2°C

#### Materials

Epoxy encapsulated coil, 20% glass filled nylon base, stainless steel armature tube and spring, zinc alloy end caps, aluminium manifold base, nitrile rubber seals.

#### Ordering Information

To order, quote model number followed by voltage code from tables overleaf, e.g. M/54/10 for a model fitted with a 24 V d.c. coil. Replacement coil and terminal box assemblies can also be supplied, quote required model number with 'Q' prefix before the 'M' and '/28' suffix after the voltage code as shown in the table overleaf. For manifold models order the required number as indicated by the 'T' suffix in the model number, e.g. 4 off QM/54/10/28 for DM/54/10/T4.





## General Information

| Model    | Operation       | Manifold Models – Number of valves | Weight (kg) | Coil and Terminal Box Assembly | Spares kit    |
|----------|-----------------|------------------------------------|-------------|--------------------------------|---------------|
| M/54     | Normally closed | –                                  | 0,069       | QM/54/*/28                     | Not available |
| DM/54/T2 | Normally closed | 2                                  | 0,127       | QM/54/*/28                     | Not available |
| DM/54/T4 | Normally closed | 4                                  | 0,243       | QM/54/*/28                     | Not available |
| DM/54/T6 | Normally closed | 6                                  | 0,359       | QM/54/*/28                     | Not available |
| DM/54/T8 | Normally closed | 8                                  | 0,475       | QM/54/*/28                     | Not available |

## Electrical Details for M/54 Valves

| Voltage      | Codes |
|--------------|-------|
| 12V d.c.     | 16    |
| 24V d.c.     | 10    |
| 24V 50/60Hz  | 81    |
| 48V 50/60Hz  | 136   |
| 110V 50/60Hz | 131   |
| 220V 50/60Hz | 137   |

|  |         |
|--|---------|
| The QM/54/*/28 replacement coil assemblies are suitable for the following solenoid pilot models: |         |
| UM/71056   | M/72056 |

|                            |   |
|----------------------------|---|
| <b>Voltage Tolerances:</b> | ±10%  |
| <b>Power:</b>              | d.c.: 1,5W<br>a.c.: 2,5VA 50Hz, (220V 3VA)<br>100% E.D.       |
| <b>Inlet Orifice:</b>      | 0,8 mm  |
| <b>Operating Pressure:</b> | 0 - 10 bar  |
| <b>Terminal Box:</b>       | 3 pin plug with cable grip<br>May be rotated at 90° intervals |
| <b>Cable Entry:</b>        | Pg7   |
| <b>Manual Override:</b>    | Standard, push to operate                                     |
| <b>Protection Class:</b>   | IP65 (DIN 40050)  |

## Warning

These products are intended for use in industrial compressed air systems only. Do not use these products where *pressures* and *temperatures* can exceed those listed under **'Technical Data'**.

Before using these products with fluids other than those specified, for non-industrial applications, life-support systems, or other applications not within published specifications, consult NORGREN MARTONAIR.

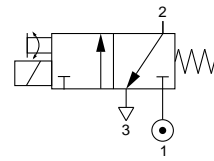
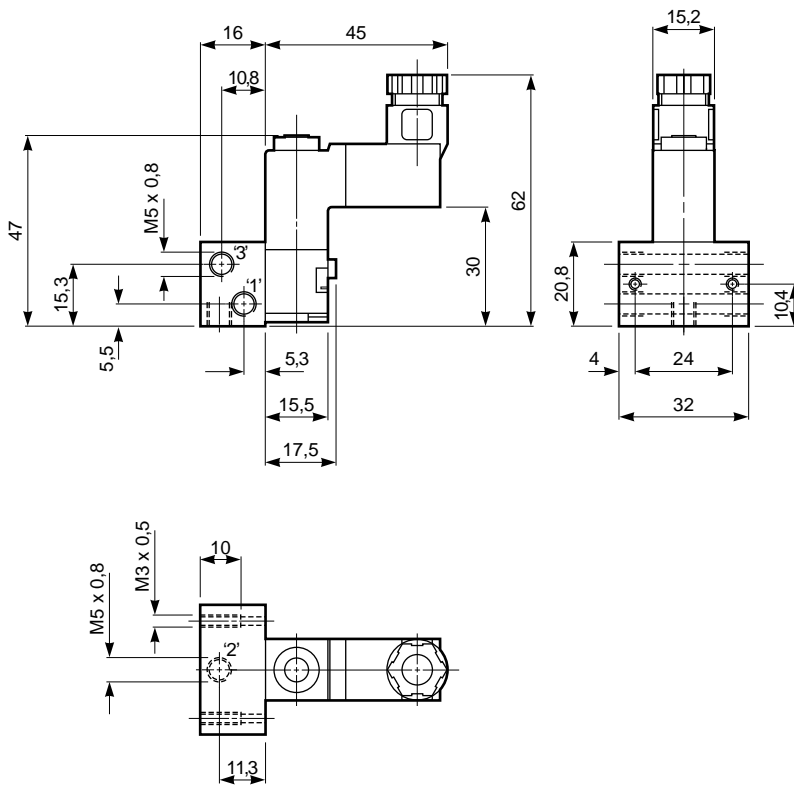
Through misuse, age, or malfunction, components used in fluid power systems can fail in various modes. The system designer is warned to consider the failure modes of all component parts used in fluid power systems and to provide adequate safeguards to prevent personal injury or damage to equipment in the event of such failure.

**System designers must provide a warning to end users in the system instructional manual if protection against a failure mode cannot be adequately provided.**

System designers and end users are cautioned to review specific warnings found in instruction sheets packed and shipped with these products.

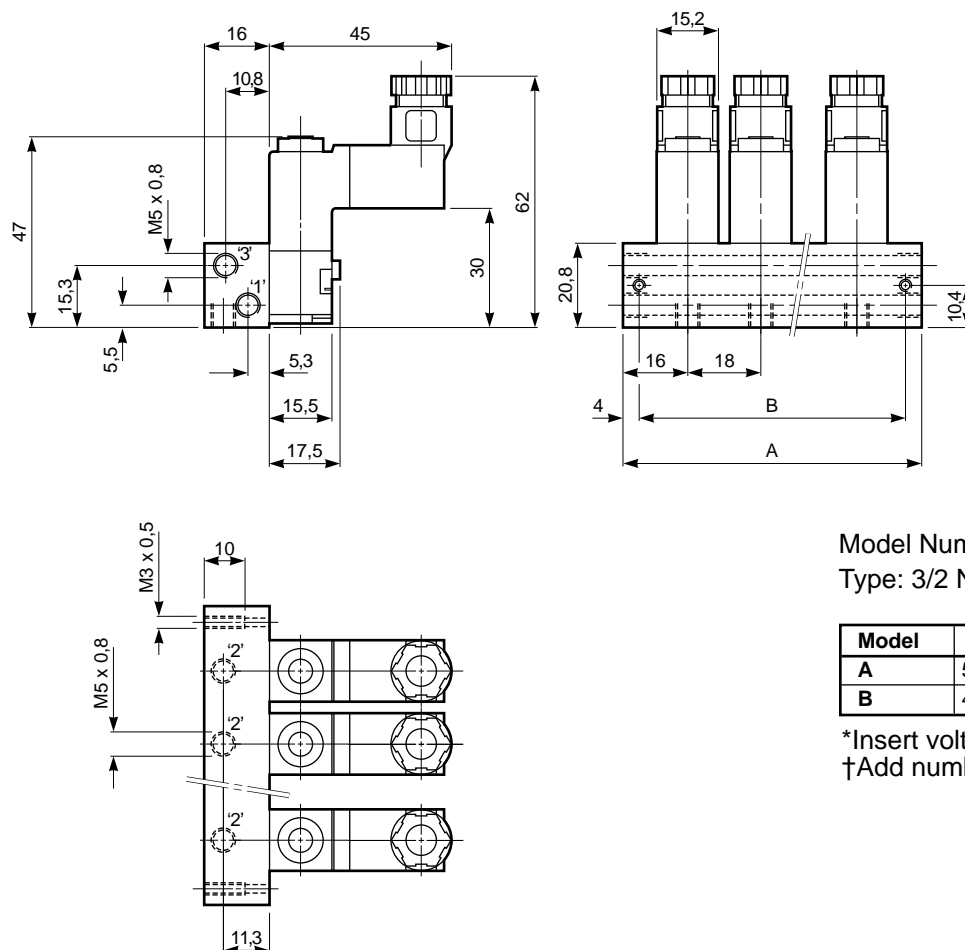


### Electrically Actuated Sub-base Mounted Valve



Model Number: **M/54**  
Type: 3/2 Normally closed

### Electrically Actuated Manifold Mounted Valve



Model Number: **DM/54\*/T†**  
Type: 3/2 Normally closed

| Model    | DM/54/T2 | DM/54/T4 | DM/54/T6 | DM/54/T8 |
|----------|----------|----------|----------|----------|
| <b>A</b> | 50       | 86       | 122      | 158      |
| <b>B</b> | 42       | 78       | 114      | 150      |

\*Insert voltage code  
†Add number of valves on manifold